

LED HIGH BAY (CSIH04)

Applications:

Suitable for commercial, retail and institutional applications including gymnasiums, factories and warehouses.

Features

- Efficacy higher than 146lm/w, designed to replace 250W, 320W and 400W HID while consumes 135W, 175W and 200W.
- 120 degree lens guarantees light intensity and light uniformity.
- Hook(default included) or Conduit pendant way for different applications.
- Optional motion sensor can be offered for maximizing energy savings.
- Optional emergency function for emergency needs.
- Superior colour rendition index compared to HPS.
- Operating temperature is -40°C to 55°C (-40°F to 131°F).
- Resistant to shock and vibration.
- UL/cUL wet location and DLC qualified.



Mounting
Suitable for Hook or 3/4" Conduit pendant.

Motion Sensor
Optional motion sensor allows for security and energy saving.

Emergency Battery
16W 2000lm 90min

Housing
Symmetrical design for consistent installed results. A large number of heat sinks for maximum heat dissipation. Combined with sensor detect added into the system, more energy would be saved and pretty less maintenance than MH technology.



PERFORMANCE DATA

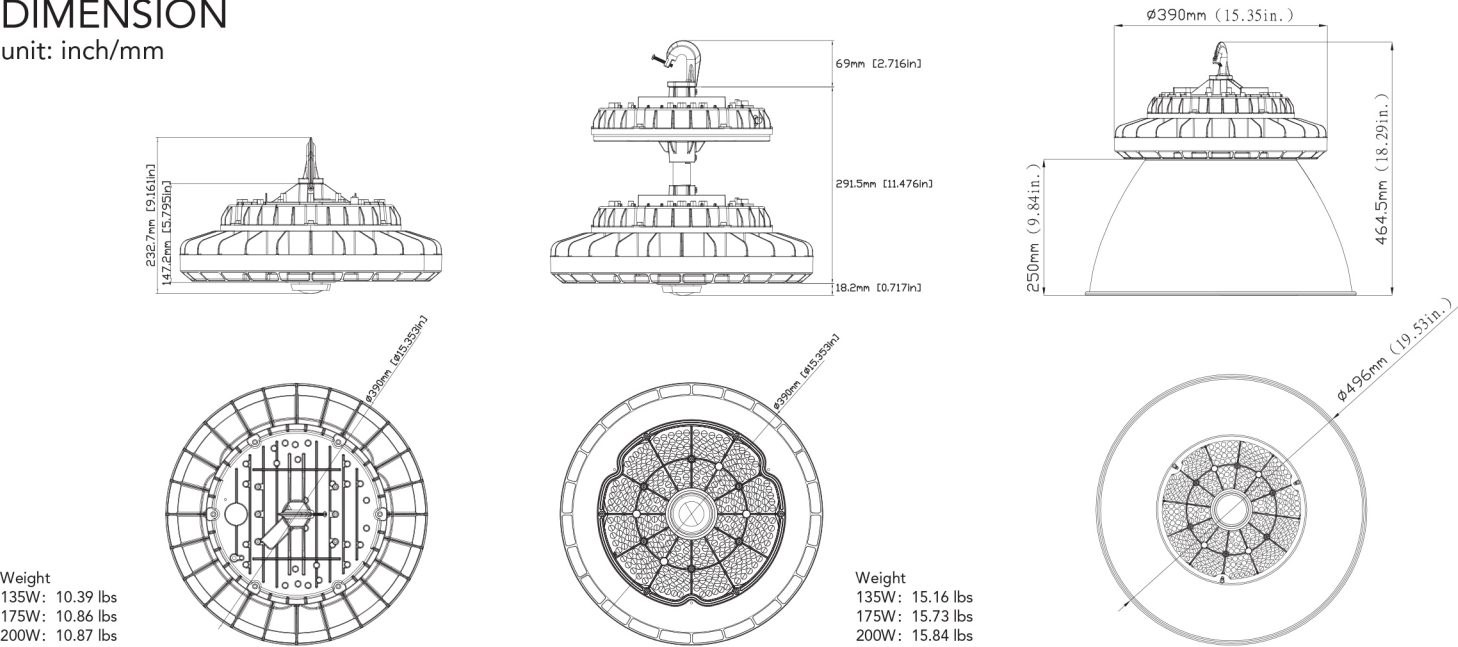
		4000K(70CRI)		5000K(70CRI)	
SYSTEM WATTS	VOLTAGE	LUMENS	LPW	LUMENS	LPW
135W	120-277VAC/347-480V	19400lm	144lm/W	19400lm	144lm/W
175W	120-277VAC	25600lm	146lm/W	25600lm	146lm/W
175W	347-480VAC	25000lm	143lm/W	25000lm	143lm/W
200W	120-277VAC	29800lm	149lm/W	29800lm	149lm/W
200W	347-480VAC	30000lm	150lm/W	30000lm	150lm/W

ELECTRICAL DATA

Number Of Drivers	Driver Current (mA)	Nominal Power (W)	INPUT VOLTAGE (V)	CURRENT (Amps)
2	3500	135	120	1.17
		135	208	0.67
		135	240	0.58
		135	277	0.51
	3700	135	347	0.40
		135	480	0.29
2	4540	175	120	1.50
		175	208	0.87
		175	240	0.75
		175	277	0.65
		175	347	0.55
		175	480	0.40
2	5200	200	120	1.75
		200	208	1.01
		200	240	0.88
		200	277	0.76
		200	347	0.63
		200	480	0.46

DIMENSION

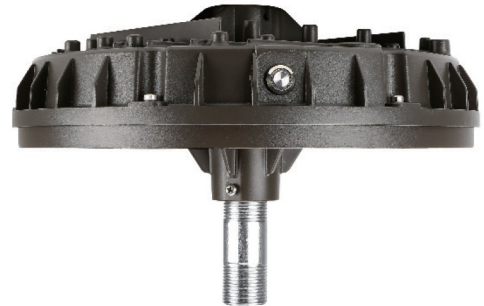
unit: inch/mm



ACCESSORIES



Motion Sensor
Integrated motion sensor available for on/off and dimming control for maximum energy savings.



Emergency Box
Emergency battery pack would provide the necessary brightness in emergency situations.
Applicable ambient temperature is 10°C (50°F) to 40°C (104°F).